

## In This Issue

- Florida School IPM Focus
- Identification
- Know the Facts
- Emphasis on Inspection
- Post Your School IPM News!

## Past Issues

### Online Training Available:

<https://eces.ifas.ufl.edu/>

### Pest Management in and Around Structures:

<http://www.eXtension.org/>

### Contact Us:

<http://schoolipm.ifas.ufl.edu/>

### Faith Oi

[foi@ufl.edu](mailto:foi@ufl.edu)

### Jennifer Gillett-Kaufman

[gillett@ufl.edu](mailto:gillett@ufl.edu)

## Florida School IPM Focus- Bed Bug Introductions

It finally happened to me (Faith)! I checked into my hotel room and was in a rush to meet friends for dinner, so did not do my check for bed bugs right away. I got back late and was thinking about skipping the bed check, but I caught something move from the corner of my eye. I smashed it and it had the characteristic pungent bed bug smell.

Look what I found under the bed skirts!



Needless to say, my lesson about “vigilance” and inspection, inspection, inspection was learned! It seems like we are spending most of our time focusing on bed bugs. As many of you know we have been working on bed bug research for several years with an emphasis on early detection using bed bug sniffing dogs. This ties in nicely with our topic today, making sure introductions do not become infestations.

As always for more information on other pests or on developing an IPM program please visit our [website](#).

---

## Identification of Introductions

The first step in IPM is to identify the insect you are working with and to determine if it is in fact a pest, with bed bugs this is not an issue, if you find one you know it is a pest. Please see **Volume 2, Number 5** for identification. The next step is to determine if there are any cultural

practices you can change to make an area less suitable for the pest to live and reproduce. This can be as simple as not allowing students items to be thrown together. Never pile book bags or jackets together.

An infestation can be defined as having virtually all of the life-cycle was present (eggs, nymphs and adults). Finding bed bugs on students will most likely be classified as an introduction into the classroom as opposed to finding bed bugs in the environment (usually classroom), even if the student's jacket or backpack may contain more than one stage of the bed bug life cycle.

We often ask people to "think like a pest". Do this while you look for bed bugs. Do you see anything that might make the area more suitable to pest development?

---

## Know the Facts: How you can help parents

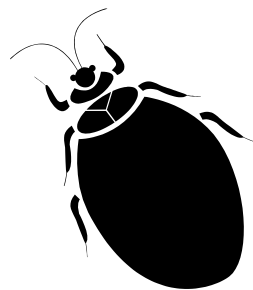


- Don't just focus on students that have bed bugs found on their belongings.
- Inform teachers and parents that vigilance against bed bugs is our first line of defense.
- Post our **tip's for parent's sheet** on your website or send it to parents via email or home with students report cards.
- Identify the behavior that started the introduction or infestation and change it. If the behavior is not modified, infestations will occur again.

---

## Emphasis on Inspection

**Inspecting is pest management.** At school and at home these are some of the places you should look for bed bugs:



- Make sure you have good lighting. Use a flashlight whose light beam can be seen, even when the lights are on. We will focus on inspection tools in our next issue.
- As always, look on bedding or in areas where people sleep the most (sofas and other nap areas should be checked as well).
- Look for bed bugs in areas where items may co-mingle like a storage cubby or locker areas.

---

## News!



We hope you will submit news items and would be happy to help you write a story if you have an idea but don't have the time to write up the information. This newsletter will be published as content arrives, please keep the information flowing! Please send news items to **Jennifer Gillett-Kaufman**.

Visit our website for back issues of **Florida School IPM News**. You can scan the QR code on the right with your smart phone or tablet to get there faster. You will need a QR code reader!