

In This Issue

- School IPM Focus
- Congratulations!
- "Like" us!
- Get your CEUs Today!
- Training Opportunities
- Post Your School IPM News!

Past Issues

Contact Us:

<http://schoolipm.ifas.ufl.edu/>

Faith Oi

foi@ufl.edu

Jennifer Gillett-Kaufman

gillett@ufl.edu

Twitter [@JGillettKaufman](#)

Michael Bentley

volcum1@ufl.edu

Entomology & Nematology

Twitter [@UFEntomology](#)

Facebook [UFEntomology](#)

Online Training Available:

<http://pmu.ifas.ufl.edu/>

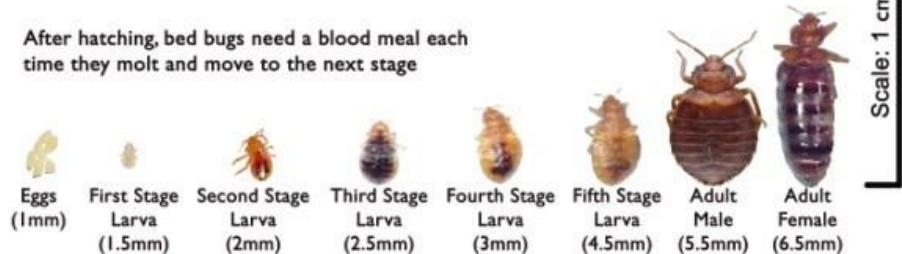
Pest Management in and Around Structures:

<http://www.eXtension.org/>

School IPM Focus - Winter Travel

Life Cycle of the Bed Bug *Cimex lectularius*

After hatching, bed bugs need a blood meal each time they molt and move to the next stage



(From: <http://www.connorspest.com/blog/bed-bug-awareness-week>)

Need we say more? As you depart for winter break, please be mindful about bed bugs.

Inspect:

- Where you place your personal belonging in public areas
- Your hotel room and look for signs of bed bugs such as blood spots, cast skins and live bed bugs
- Your luggage after returning from holiday travels so that bed bugs are not introduced into your home or to the school

If bed bugs do happen to sneak home with you, DO NOT panic. There is a difference between an introduction and an infestation. If there is just one bug, simply kill and remove it. If there is an infestation, call a reputable pest control company with experience in bed bug control. We recommend using a professional in this case.

If you have a bed bug infestation, only use products that are intended for bed bug control and have a proven record of being effective. For more information on WHAT NOT TO DO, [click here](#).

Have a very Merry Christmas and a happy holiday season!

Congratulations to Bibiana Mendez-Barrett, Collier County Public Schools

"Bibi" is the first school district person to complete the General Household Pest Management series from Foundations through



the Expert level! Her hard work and dedication in class was inspiring! Congratulations to Collier County Public Schools as well for demonstrating their support and dedication to IPM in schools. We hope to see more school staff attend Pest Management University in 2014!

“Like” us on Facebook, “follow” us on Twitter, and “invite” us on LinkedIn

Want to hear short updates from us in between newsletters? “Like” us on Facebook and “follow” us on Twitter!

 [Facebook](#)

 [Twitter](#)

 [LinkedIn](#)

Upcoming Training Opportunities

Are you ready for 2014? Termite, GHP and L&O training available!

WDO category

Jan 29-31, 2014, [Termite Foundations](#), **only 8 slots left!**

Mar 13-14, 2014, [WDO Inspections and Form 13645](#)

July 30, 2014, [Termite Basics](#)

GHP Category

Feb 26-28, [GHP Foundations](#)

July 31, 2014, [GHP Basics](#)

L&O Category

Next spring enroll in Landscape IPM: Ornamentals and Turf, and take your first steps toward getting a UF Pest Management certificate or becoming LMA certified!

A three credit/12 week course will be offered starting January 2014 at the University of Florida (UF). The course is called "[Landscape IPM: Ornamentals and Turf](#)" and is course number IPM 4254. This course will be offered for UF credit and will be available for students that are enrolled at UF or for people outside UF that are interested in the material. UF will offer the course next spring (2014) and it will be available 100% online. You must have computer and internet access to take this class. This course is for UF juniors and seniors and landscape and pest management supervisors and owners.

This course will be used as a measure for LMA Certification. The LMA will offer students who pass this class (with an A or a B) the opportunity to

become LMA Certified without additional testing since they will be tested as part of the course. This course will also count towards a UF Certificate in Landscape Pest Management.

Learn more about the UF distance program, including costs and how to register-

<http://entnemdept.ufl.edu/academics/distance/>

To register for this course please complete a Nondegree Registration Request at the following website: <http://www.isis.ufl.edu/cgi-bin/eaglec?MDASTRAN=nda-intro>

You will need to fill out some personal information on the form and the following course information:

- Select Year and Term of Registration: 2014 Spring (January)
- College: THE COLLEGE OF AGRICULTURAL AND LIFE SCIENCES – Entomology Undergrad Distance Courses
- Course Information: Prefix- IPM. Number- 4254.

If you have trouble filling out this form and registering for the course please contact Ms. Ruth Brumbaugh, Entomology and Nematology Department Student Services Coordinator. Phone: 352-273-3912 Email: brumbaug@ufl.edu . **Let Ms. Brumbaugh know you want to register for IPM 4254 as a Nondegree seeking student.**

If you would like more information about the course please contact the course instructor Dr. Jennifer L. Gillett-Kaufman Phone: (352)273-3950 Email: gillett@ufl.edu . She cannot help you with registration and will forward all registration requests to Ms. Brumbaugh.

News!



We hope you will submit news items and would be happy to help you write a story if you have an idea but don't have the time to write up the information. We like to share news and video when it happens using our social media outlets- **Twitter**, **Facebook** and **YouTube**. When you send news we will post it on one or more of these sites and again in the monthly newsletter. Feel free to send news or announcements as soon as they happen and we will post them. We hope this will get you more visibility. Please send news items to **Michael Bentley**.

Visit our website for back issues of **Florida School IPM News**. You can scan the QR code on the right with your smart phone or tablet to get there faster. You will need a QR code reader!