

In This Issue

- Florida School IPM Focus
- Identification
- Know the Facts
- Emphasis on communication
- Post Your School IPM News!

Past Issues

Online Training Available:

<https://eces.ifas.ufl.edu/>

Pest Management in and Around Structures:

<http://www.eXtension.org/>

Contact Us:

<http://schoolipm.ifas.ufl.edu/>

Faith Oi

foi@ufl.edu

Jennifer Gillett-Kaufman

gillett@ufl.edu

Florida School IPM Focus- Good Neighbor Practices

Schools are often thinking about reducing risks. One overlooked area is planning for accidental pesticide drift from neighbors. Having a plan in place and having open communication with all of your neighbors could significantly reduce the risk your school occupants may face.

Some school districts may already have detailed plans in place on how you should communicate with neighbors about these issues. If your school district does not, please consider distributing **our brochure** that includes some of these practices for improving communication with your neighbors. Remember that communication and planning are critical parts of a successful IPM program!

Developing Good Neighbor Practices (GNPs) The goal of the development, implementation and measurement of the effectiveness of the Good Neighbor Practices is to decrease the risk of pesticide drift exposure for children at school and to increase communication between school personnel and neighboring landowners. These activities should go hand-in-hand with your school IPM program.

As always for more information on pests or on developing an IPM program for your school or district please visit our **website**.

Identification of Possible Risk

We often think about risk from the perspective of what am I doing that may pose a risk to the students and staff at this facility. We want you now to think about the possibility of chemical trespass or drift from nearby properties.



The problem of pesticide drift is not new. What has changed is urbanization and encroachment into areas that have been predominantly agricultural. Determining the magnitude of the pesticide drift problem is difficult. Since urbanization has increased the number of schools in proximity to agricultural lands, there have been several high profile reports concerning drift and children.

Defining the problem. The EPA defines drift as the "physical movement of a pesticide through air at the time of application or soon thereafter, to any site other than that intended for application (often referred to as off target)." Drift is a complex issue and should be addressed, particularly when children are involved. Whether drift incidents can be confirmed or not, high profile complaints can consume valuable resources and time.

We believe that the most difficult and urgent cases of drift mitigation will occur where buffers are not an immediate option, hence our strategy to help you develop Good Neighbor Practices (GNPs). Over the last few years, we have received an increasing number of reports of conflict surrounding both urban and agricultural practices. These reports often come through various news media and can have negative impacts for both agricultural and non-agricultural communities, including lost time and money needed to rectify any misperceptions and complaints.

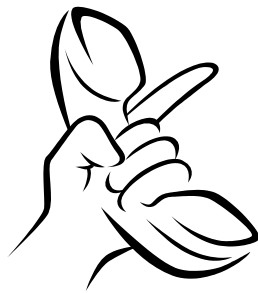
Know the Facts: Start Talking!

Letting your neighbors know about activities on your school campus will help them make smart choices about applications that may impact your school grounds. In a recent survey of Florida schools these were the top methods for communication with neighbors: neighborhood newsletters, using the school marquee, phone calls with neighbors and using the local news.

You may not think that maintenance of school grounds could impact your neighbors but it is important to communicate with neighbors who are: agricultural producers, organic farmers or may be chemically sensitive. Remember that communication goes both ways.

Emphasis on Communication

Communication is pest management.



- UF/IFAS has Extension Offices in each of Florida's sixty-seven counties. Twelve Research and Education Centers (RECs), Research and Demonstration Sites (RDSs), and several other offices are located throughout the state.
- If you need help making a communication plan or getting to know your neighbors a great place to start is your local County Extension Office. With an office located in every county it has never been easier to partner with the University of Florida and your local County Government. To find an office near you please visit:
<http://solutionsforyourlife.ufl.edu/map/>

New Contact information

A favorite PMU Instructor and member of the Florida School IPM Advisory Committee, **Mark H. Ruff**, announced the opening of his own firm to better serve the needs of the pest management industry. You can contact him at: Law Offices of Mark H. Ruff, P. A.

PH: 407-268-6677 Email: mark@mhrlaw.com

Come and see Mark and our new Pest Management Learning Laboratory donated by DACS at PMU in Apopka!

News!



with your smart phone or tablet to get there faster. You will need a QR code reader!

We hope you will submit news items and would be happy to help you write a story if you have an idea but don't have the time to write up the information. This newsletter will be published as content arrives, please keep the information flowing! Please send news items to **Jennifer Gillett-Kaufman**.

Visit our website for back issues of **Florida School IPM News**. You can scan the QR code on the right